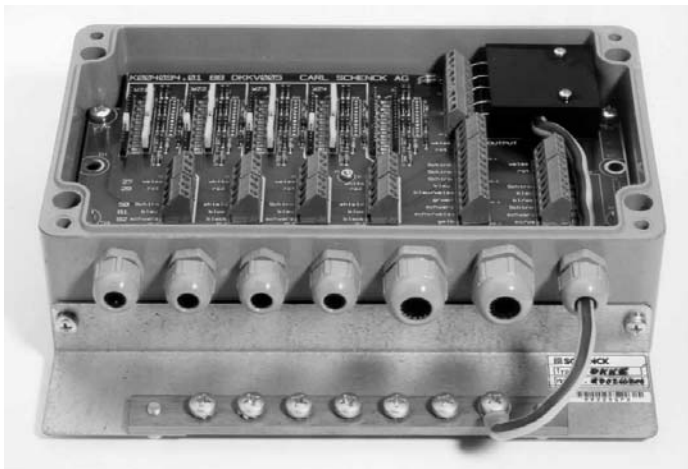


Cable Boxes Types DKK, VAK, VKK and FAK



- Easy to install
- Protected to IP 65
- Different variants for extension or summation of load cell cables
- Suitable for use in hazardous areas and severe environments
- Highly resistant to aggressive media
- Open-ended for overvoltage protection

Application

The **cable boxes**, types VKK 280x1, are designed for extension of the load cell connecting cable.

The **cable summation boxes**, types DKK 6, VKK 280x6, VKK 280x4 and VKK 280x8, are designed for inter-connecting the load cells of a scale.

In case of high demands on weighing accuracy, the built-in series resistors can be used for corner adjustment.

Thanks to the plug-in jumpers balancing is especially easy and time saving.

Depending on the application, the cable boxes type FAK can be used for mere extension of the load cell connecting cable and other sensor lines, but also for summation of the signals of multiple load cells (without corner adjustment).

Design

The DKK / VAK / VKK / FAK cable boxes are made of aluminium die-cast, polyester or stainless steel.

For easy mounting within the box, all cable connections are screwed in place or clamped.

Performance

As cable summation box, types VKK 280x4 are available for 4 load cells, types DKK 6 and VKK 280x6 for 6 load cells and VKK 280x8 for 8 load cells.

The cable summation boxes are universally applicable. For high temperatures (up to approx. +150°C depending on the measuring cable used), housings are made of aluminium.

If the cable box is exposed to aggressive media or mounted in severe environments, plastic housings are preferred.

The stainless steel boxes are suitable for both application areas. Load cells both with 4- and 6-wire cable can be connected.

All cable boxes DKK and VKK are equipped with potential-equalization rail for polyester housing of the potential-equalization lines.

For use in hazardous areas, cable boxes and cable summation boxes are available as EExe and EExi variants.

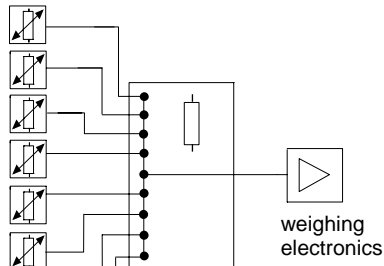
Variant	Order No. Standard Design	Order No. Variant 2G for intrinsically safe circuits in ATEX Zone 1 (Category 2G)	Order No. Variant 2D for ATEX Zone 21 (Category 2D)	Order No. Variants 3GD for ATEX Zone 2 and 22 (Category 3GD)
VKK 28008 Cable summation box for max. 8 load cells, polyester housing, integrated overvoltage protection, screw terminals	V 041 675.B01	V 041 676.B01	V 045 310.B01	on request
DKK 6 Cable summation box for max. 6 load cells, polyester housing, screw terminals	D 707 464.02	D 707 467.02	V 038 916.B01	V 030 593.B01
VKK 28006 Cable summation box for max. 6 load cells, polyester housing, spring terminals	V 076 863.B01	V 076 882.B01	-	-
VKK 28004 Cable summation box for max. 4 load cells, polyester housing, spring terminals	V 053 953.B01	-	-	-
VKK 28014 Cable summation box for max. 4 load cells, aluminium diecast housing, spring terminals	V 053 954.B01	-	V 076 877.B01	-
VKK 28024 Cable summation box for max. 4 load cells, stainless steel housing, spring terminals	V 053 955.B01	V 076 876.B01	-	V 076 878.B01
VKK 28001 Cable extension box, polyester housing, spring terminals	V 053 956.B01	-	-	-
VKK 28011 Cable extension box, aluminium diecast housing, spring terminals	V 053 957.B01	-	V 076 871.B01	-
VKK 28021 Cable extension box, stainless steel housing, spring terminals	V 053 958.B01	V 076 870.B01	-	V 076 872.B01
VAK 28040 Cable box with 14 terminals , extension 1 load cell + 2 sensors or 2 load cells without corner adjustment , polyester housing	V 029 901.B01	V 029 905.B02	V 025 345.B01	V 029 905.B01
VAK 20350 Cable box with 12 terminals, 16 terminals blue, 2 motors + thermo, 4 load cells, tacho, polyester housing	-	V 000 747.B01 combination EEx e and EEx i	V000747.B01	on request
VAK 20360 Cable box with 28 terminals, 2 motors + thermo, 4 load cells, polyester housing	V 007 856.B01	-	-	-
FAK 0080 Cable box with 18 terminals, 4 load cells + 2 sensors (without corner adjustment), polyester housing	K 000 775.03	V 029 906.B02	V 025 344.B01	V 029 906.B01

Options

DBS 6 Overvoltage protection module for retrofit of a DKK 6 / VKK 28006	D 707 465.01
VBS 28011 Overvoltage protection module with aluminium housing, to protect the load cell resp. the weighing electronics	V 053 969.B01
VBS 001 Overvoltage protection module without housing (printed circuit board)	V 039 944.B01
Cable glands for VKK 28021 from stainless steel (standard brass)	
Cable glands for VKK 28024 from stainless steel (standard brass)	

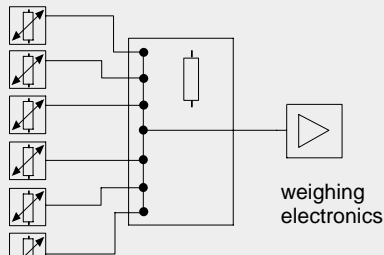
Function

VKK 28008



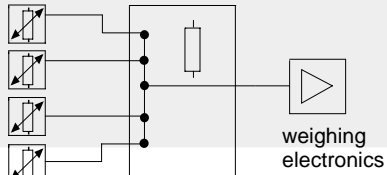
load cell

DKK 6



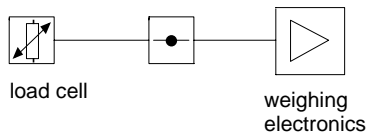
load cell

VKK 280x4



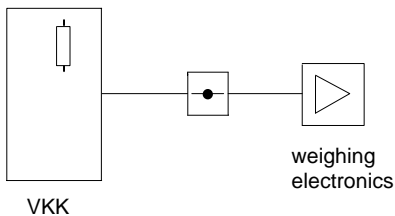
load cell

VKK 280x1



load cell

VBS 001/28011

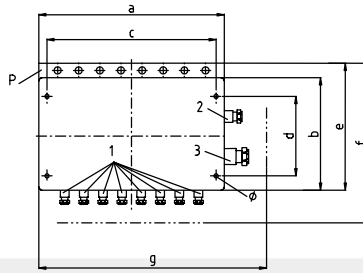


VKK

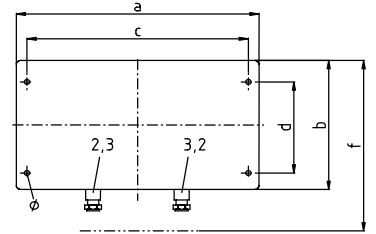
In combination of cable summation boxes with overvoltage protection (DKK 6 [VKK 28006] with DBS 6; VKK 28008) one VBS module is used close to the weighing electronics (max. 1m). In all other cases a 2nd VBS module is required close to the DKK / VKK!

Dimensions

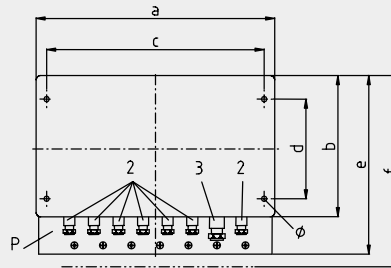
VKK 28008



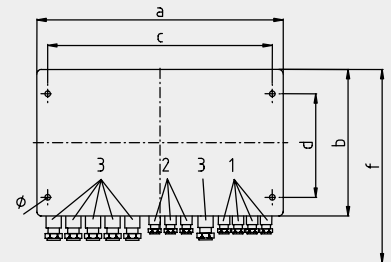
VAK 28040



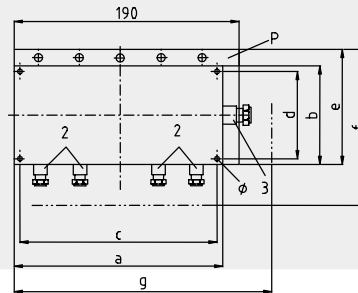
DKK 6 / VKK 28006



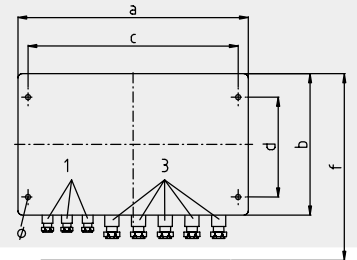
VAK 20350 / 20360



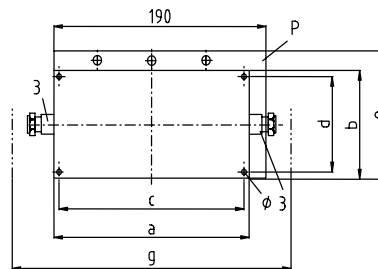
VKK 28004 / 28014 / 28024



FAK 0080



VKK 28001 / 28011 / 28021 / VBS 28011



P = potential-equalization rail Ø = fixing bore

Cable inlet

- 1 = M12 Cable Ø 4.5 - 10 mm
- 2 = M16 Cable Ø - 13 mm
- 3 = M20 Cable Ø 5 - 10 mm
- 4 = M25 Cable Ø 9 - 17 mm

Dimensions									
Typ	a mm	b mm	c mm	d mm	e mm	f mm	g mm	Height mm	Ø
VKK 28008	260	160	240	110	210	270	320	90	6,5
DKK 6	260	160	240	110	210	220	-	90	6,5
VKK 28006	260	160	240	110	210	220	-	90	6,5
VKK 28004	190	75	178	45	105	160	250	60	4,5
VKK 28014	175	80	163	52	105	165	235	60	4,8
VKK 28024	200	100	229*	43,5*	-	160	260	75	10
VKK 28001	190	75	178	45	105	-	310	60	4,5
VKK 28011	175	80	163	52	105	-	295	60	4,8
VKK 28021	200	100	229*	43,5*	-	-	320	75	10
VAK 28040	122	120	106	82	-	180	-	90	6,3
VAK 20350	260	160	240	110	-	220	-	90	6,3
VAK 20360	260	160	240	110	-	220	-	90	6,3
FAK 0080	220	120	204	82	-	180	-	90	6,3

* The VKK 28024 / 28021 has only 2 (instead of 4) fixing holes.